

OLD BRIDGE - PLACE STANDARD



The Old Bridge Community took part in Place Standard tool training on the 2nd October in partnership with Tipperary County Council, Sláintecare Healthy Communities and Healthy Ireland.

The Place Standard tool provides a simple framework to structure conversations about place. It allows you to think about the physical elements of a place (for example its buildings, spaces, and transport links) as well as the social aspects (for example whether people feel they have a say in decision making).

The Old Bridge community surveyed 2 areas in Old Bridge:

- Green Lane, back of Central Garage and greenway/back lands.
- Edel Quinn memorial, green area near the shop, partial walk up to the Holy Year Cross




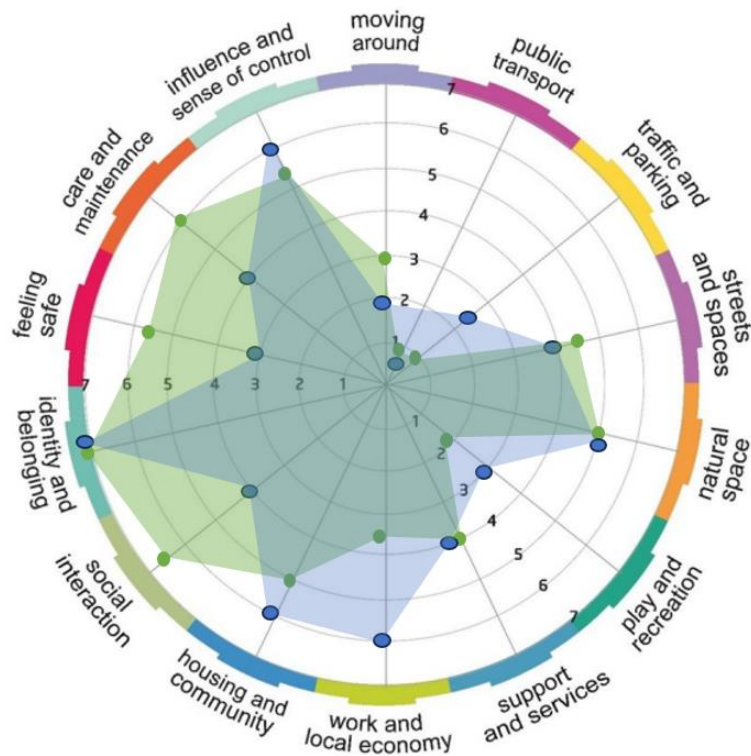
Place Standard Findings - provides a framework to structure concentrated conversations around Old Bridge and how good it is and what needs attention or focus – scores are average from the participants that took part in the training.

	Moving Around	Public transport	Traffic & Parking	Streets & Spaces	Natural Space	Play & recreation	Facilities & services	Work & Local Economy	Housing & Community	Social Interaction	Identity & Belonging	Feeling Safe	Care & Maintenance	Influence & Sense of control
Old Bridge	2.5	0.75	1.75	4.25	5.0	2.5	4.0	4.75	5.5	5.25	7.0	4.25	5.0	5.75

Little room for Improvement

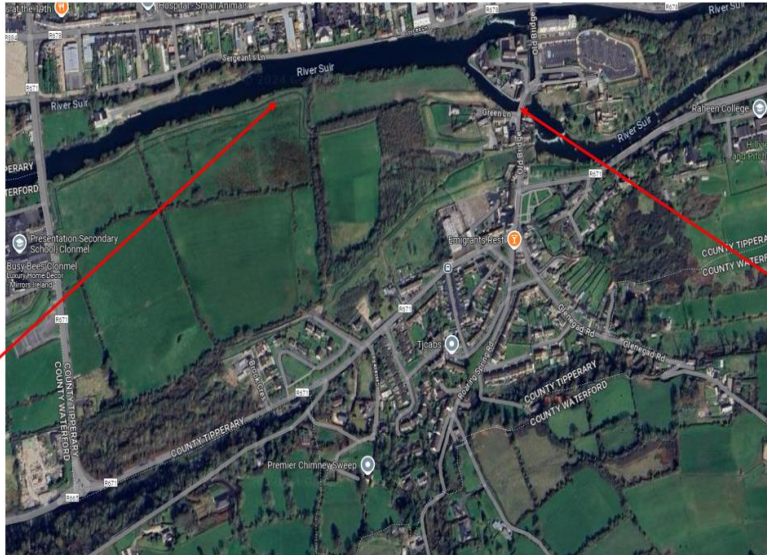
Lots Room for Improvement





Some Feedback – short -term

Trimming back and cleaning of path overgrowth and fixing of fence and repair seating along Suir walk



Trimming back of all trees at bridge viewing location as per committed in Blueway and enable pedestrian access to water sport berthing location

Some Feedback – longer term

Repurposing area into useable green public space e.g Biodiversity Park to give it life and new usage and prevent opportunity for ASB



Utilise Active Travel (e.g cycle lane re school access) to minimise Heavy Goods Traffic and slow down traffic and aid parking situation.

OLD BRIDGE REVIEW

Main Issues & Priorities



- No pedestrian crossing in Old Bridge.
- Continuous parking on footpath
- Double parking around shop.
- Speed – no speed ramps.
- Footpaths blocked – inaccessible for wheelchairs, prams due to bins blocking footpath etc.
- No local bus.
- Traffic volume too high through Old Bridge residential area.
- More community work with youth to give them a sense of pride in their community.
- Encourage more integration with new members of the community.
- More community events/meetings.
- Better garda involvement.
- Lanes, hedges need to be cut back, area behind pub overgrown.
- Edel Quinn park not accessible by wheelchair.
- No community space.
- Trees overgrown at glass Bridge viewing location.
- Suir walk path overgrown.
- Lack of signage – St Nicolas's graveyard.
- No dog waste bin.

Next Steps

Actions to be taken

- Introduce Local Link bus to Old Bridge area with access to the town.
- Improve maintenance of green spaces.
- Road safety/traffic calming/pedestrian crossing.
- Trimming back and clearing of Suir river path
- Trimming back of trees at glass bridge viewing location.
- Utilise Active Travel (e.g. cycle lane re school access) to minimise heavy goods traffic & slow down traffic & assist parking.
- Progress opening of Community House for community meetings, youth club & community events.
- Roll out Place Standard tool survey with young people and older adults in Old Bridge.
- Feedback key priorities to relevant agencies.
- Follow-up community meeting with the Old Bridge Committee.